

## 1. GENERAL SAFETY INSTRUCTIONS

**⚠ Please take the time to read these instructions carefully and always keep them in the storage pouch provided (14) on the child seat for later reference. The instructions must accompany the child seat if it is later passed on to a third party.**

- ⚠ DANGER! For the protection of your child:**
- Before closing the vehicle door, check that neither your child nor any parts of the child seat can get jammed in the door.
  - In the event of an accident at a collision velocity greater than 10 km/h, it is possible that the child seat may be damaged without the damage being immediately visible. In this case the child seat must be replaced. Please dispose of it properly.
  - Always have the child seat examined if it has been damaged (e.g. if it falls to the ground).
  - Regularly check all important parts for damage. In particular, ensure that all the mechanical parts are fully functional.
  - Never lubricate any parts of the child seat with grease or oil.
  - Never leave your child unattended in the child seat in the vehicle.
  - Have your child enter and exit the vehicle on the pavement side only.
  - When not in use, protect the child seat from direct exposure to sunlight. The child seat can become very hot in direct sunshine. Children's skin is sensitive and could be harmed as a result.
  - The more snugly the belt fits over your child's body, the safer your child will be. Therefore, avoid having your child wear thick clothes under the belt.
  - On long journeys, take regular breaks in order to give your child a chance to run about and play.
  - If using on the rear seat: Move the front seat far enough forward to ensure that your child's feet will not knock against the backrest of the front seat (to prevent the risk of injury).

- ⚠ DANGER! For the protection of all vehicle occupants:**
- In the case of an emergency stop or accident, unsecured objects or people may cause injury to other occupants in the vehicle. Therefore, please always ensure that...
- no load-bearing contact points are used other than those specified in these instructions and those marked on the child seat.
  - the backrests of the car seats are secured (for example, check that any fold-down rear seat bench has snapped into place).
  - all heavy or sharp-edged objects present in the vehicle (e.g. on the parcel shelf) are held securely.
  - all persons in the vehicle have their seatbelts fastened.
  - the child seat is secured whenever it is in the vehicle, even if it is not carrying a child.

**⚠ WARNING! For your protection when handling the child seat:**

- Never use the child seat in a free-standing position, not even for testing.
- To avoid damage, ensure that the child seat is not jammed in between hard objects (car door, seat rails, etc.).
- Keep the child seat in a safe place when not in use. Do not place heavy objects on the seat and do not store directly next to heat sources or in direct sunlight.

**CAUTION! To protect your vehicle:**

- Certain car seat covers made from more sensitive materials (e.g. velour, leather, etc.) may show wear marks after a child seat has been used. For optimum protection of your car seat covers, we recommend using the BRITAX RÖMER car seat protector from our range of accessories.

## 9. DISPOSAL

Please observe the waste disposal regulations in your country.

Disposal of packaging	Container for cardboard boxes
Seat cover	Residual waste, waste incineration
Plastic parts	To be placed in the corresponding container according to the labels
Metal parts	Container for metals
Belt straps	Container for polyester
Buckle and clip	Residual waste

### BRITAX RÖMER Child Safety EMEA

www.britax-roemer.com | hello@britax-roemer.com

**BRITAX RÖMER Kindersicherheit GmbH**  
Kindersicherheit GmbH  
Theodor-Heuss-Straße 9  
89340 Leihpheim  
Germany  
+49 (0) 8221 3670 199

**BRITAX Excelsior Limited**  
1 Churchill Way West  
Andover  
Hampshire SP10 3UW  
United Kingdom  
+44 (0) 1264 386034

**BRITAX Nordiska Barn AB**  
Jürgen Kocksgatan 4  
SE-211 20 Malmö  
Sweden

## 2. USE IN THE VEHICLE

### 2.1 Use as intended

This child seat has been designed, tested and approved according to the requirements of the European Standard for Child Safety Equipment (UN 129/03). It is designed to secure a child in the vehicle. It may only be used on forward-facing or rear-facing vehicle seats. It is **not** a toy and is **not** suitable for use as a seat outside the vehicle.

The child seat is approved for use both with and without the XP-PAD.

### 2.2 SAFETY NOTES

#### Elimination of the protective function through modifications

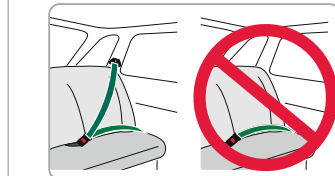
Unauthorised technical changes can cause the protective function of the seat to be reduced or completely eliminated. The certification is invalidated if any modifications are made to the child seat.

- Do not make any technical changes to the child safety seat.
- Only the manufacturer is permitted to make modifications to the child safety seat.

#### Risk of injury through improper use

If you do not use this product as intended, serious injury or death may result.

- **Never** secure the child seat with a 2-point seat belt.



- Read and follow the instruction manual for the vehicle used to transport this child seat.
- If there is a front airbag, slide the vehicle seat a long way back.
- If in doubt, refer to the manufacturer or the vendor of the child restraint system.
- Use the child seat according to the body height of the child to be secured.

## 2.3 Requirements

This child seat is approved for three installation methods, **A**, **B1** and **B2**. Use the installation method depending on the size of the child to be secured.

- ① **Tip!** The installation methods can be found in Section 5 "Installation & Use" [page II].
- ① **Tip!** Information on the vehicle seats can be found in the instruction manual for the vehicle. If in doubt, refer to the manufacturer or vendor of the vehicle.

**From 15 months / 76 cm - 102 cm / up to 21 kg** (i-Size Universal ISOFIX)

Use installation method **A**. The child seat may only be used on the following vehicle seats:

- Vehicle seats with i-Size approval.
- Vehicle seats approved for ISOFIX size class "B1" and a body weight of the child to be secured of 9-18 kg. In addition, the vehicle seat position must have a top tether anchorage point.

**100 cm - 133 cm** (i-Size booster seat)

Use installation method **B1**. The child seat may only be used in vehicle seats that are listed in the attached vehicle type list.

Alternatively, you can use installation method **B2**. The child seat may only be used on vehicle seats equipped with a 3-point automatic seat belt approved according to UN R16 or a similar standard.

- ① **Tip!** The automatic seat belt has an "E" or "e" in a circle on the test label.
- ① **Tip!** Some vehicle seats reduce the adjustability of the child seat. This affects the "Adjust seat angle" and "Adjust headrest" functions.

**133 cm - 150 cm** (Specific vehicle booster seat)

Use installation method **B1** or **B2**. The child seat may only be used in vehicle seats that are listed in the attached vehicle type list.

- ① **Tip!** The latest version of this list can be obtained from our website. www.britax-roemer.com

## 3. CARE AND MAINTENANCE

### TAKING CARE OF THE HARNESS BUCKLE

To ensure the safety of your child, it is essential that the harness buckle continues to function correctly. Harness buckle malfunctions are usually caused by dirt accumulation or by external objects. Such malfunctions may be:

- When you press the red release button, the buckle clips are ejected only slowly.
- The buckle clips no longer engage (i.e. they pop out again when you try to push them in).
- The buckle clips do not engage without an audible click.
- The buckle clips are difficult to push in (you feel a certain amount of resistance).
- It takes a lot of force to open the harness buckle.

#### Remedy

Rinse out the harness buckle so that it works perfectly again:

#### CLEANING THE HARNESS BUCKLE

1. Open the Velcro fastener on the crotch cushion (31) and remove it.
2. Remove the grey release plate (32) as described in Section "10. REMOVING THE 5-POINT HARNESS AND RE-ATTACHING SECUREGUARD".
3. Place the release plate (32) along with the harness buckle (20) in warm water with some washing-up liquid for at least one hour.
4. Thoroughly rinse the harness buckle (20) and dry it completely.
5. Attach the grey release plate (32) as described in Section 10. "REMOVING THE 5-POINT HARNESS AND RE-ATTACHING SECUREGUARD".
6. Attach the crotch cushion (31).

#### CLEANING

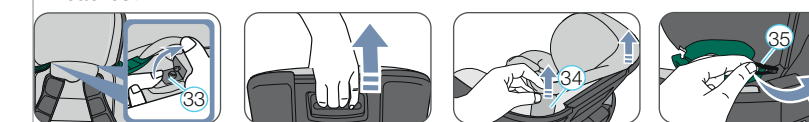
**⚠ CAUTION** Please ensure that you use only original BRITAX replacement seat covers, as the seat cover is an integral part of the child seat and is important for correct functioning of the system. Replacement seat covers are available from your dealer.

**⚠ CAUTION!** The child seat must not be used without its cover.

- The seat cover can be removed and washed with a mild detergent in a washing machine with the "Delicates" programme (30 °C). Please follow the instructions on the washing label of the seat cover.
- The shoulder cushions can be removed and washed in lukewarm soapy water.
- The plastic parts, SecureGuard, XP-PAD and the belts can be cleaned with soapy water. Do not use aggressive cleaning agents (such as solvents).

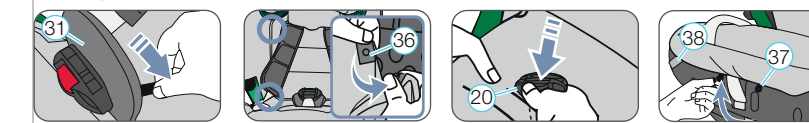
### Removing the cover

#### Headrest

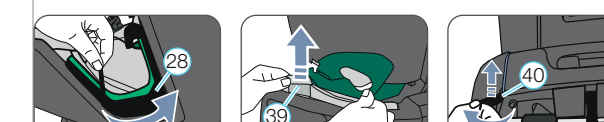


1. Open the two press studs (33) at the belt slots.
2. Push the headrest of the child seat to the topmost position.
3. Pull the elastic band up from the edge of the tray and pull the tabs (34) out of the two slots in the seat pan.
4. Pull the cover edge out of the gap between the seat pan and the inlay cushion.
5. Unhook the rubber loops (35) under the headrest.

#### Seat pan



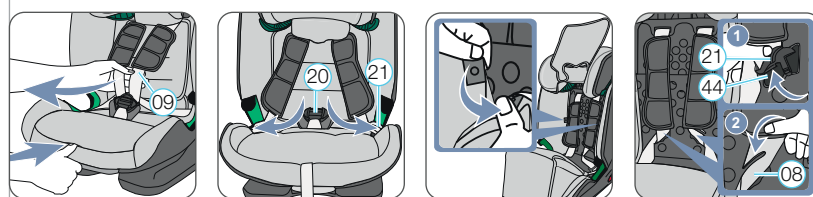
6. Undo the Velcro fastener on the crotch cushion (31) and remove it.
7. Open the four press studs (36) on the seat and back surface.
8. Push the harness buckle (20) or SecureGuard (26) through the cover slot.
9. Unhook the rubber loops (37) at the front under the seat surface and pull the tabs (38) out of the seat pan.
10. Pull the rubber loops carefully out of the gap around the belt guides (28).
11. Pull the cover edge and tabs (39) out of the gap between the seat pan and the inlay cushion.
12. Pull the rubber loops (40) at the top of the back of the backrest out of the gap in the seat pan and and unhook them.



#### Reattaching the cover:

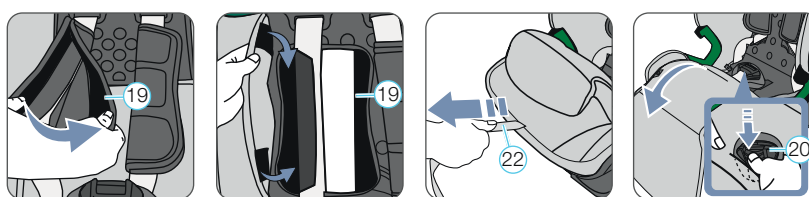
Simply follow the steps above in reverse order.

## 10. REMOVING THE 5-POINT HARNESS AND RE-ATTACHING SECUREGUARD

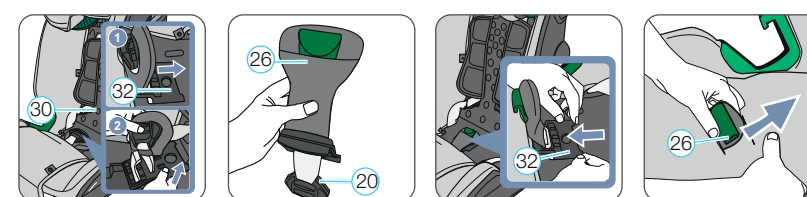


"We recommend using the 5-point harness as long as possible. Only install the SecureGuard when the child to be secured is taller than 102 cm."

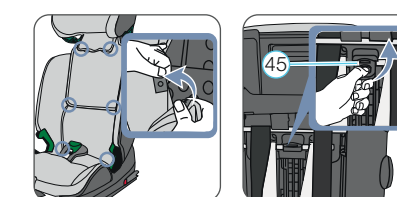
1. Loosen the 5-point harness on the child seat as far as possible (09).
2. Open the harness buckle and place the belt clips (21) in the belt guides on the sides.
3. Loosen the press studs on the backrest and fold the upper half of the cover upwards and the lower half downwards.
4. Insert the belt clips (21) in the recess provided on the (44) inside of the backrest.



5. Open the two shoulder cushions (19) by the Velcro fasteners on the side.
6. Push the safety catch at the centre of the group change switch (45) under the backrest cover and attach it to the fleece strip provided. Check that the two shoulder cushions are not overlapping.
7. Pull the adjusting strap (22) to tighten the harness.
8. Release the two press studs on the seat cover and fold the cover forwards. While doing this, pull the harness buckle (20) out of the cover.



9. Raise the grey release plate (32) and push it along with the harness buckle (20) towards the backrest (30).
10. Turn the grey release plate around (32) so that the SecureGuard (B) (26) is at the top and the harness buckle (A) (20) is at the bottom.
11. Stow the harness buckle (20) in the recess provided and push the grey release plate (32) back into the holder until it engages with an audible click.
12. Pass the SecureGuard (26) through the slot in the cover with sow-on B.



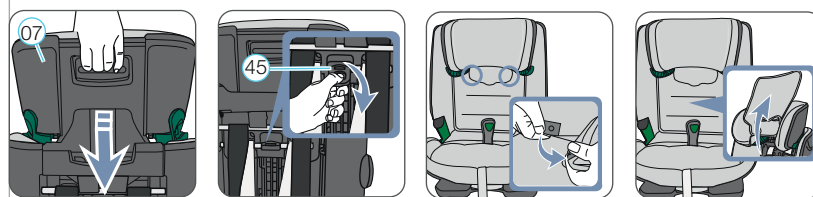
13. Close the two bottom press studs on the cover.
14. Close the two top press studs on the cover.
15. Close the two press studs on the upper cover of the headrest.

#### Child seat back

16. Press the safety catch at the centre of the group change switch (45), at the same time moving it to the upper position.

- ① **Tip!** The headrest (07) can be adjusted for body heights between 100 cm and 150 cm.

## 11. RE-ATTACHING THE 5-POINT HARNESS AND REMOVING SECUREGUARD

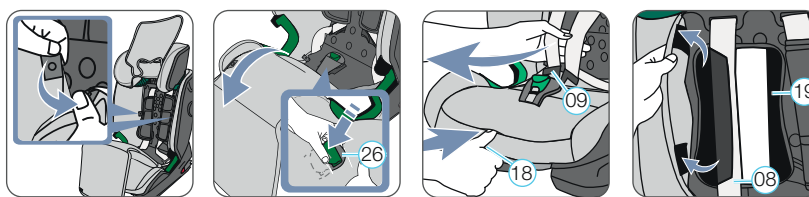


#### Child seat back

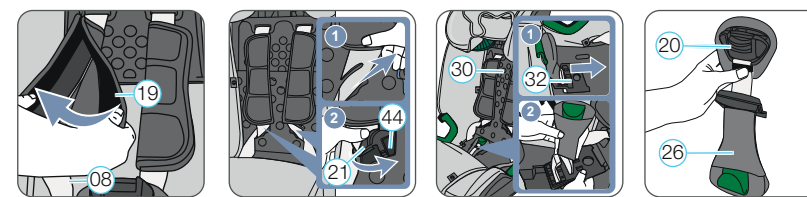
1. Slide the headrest (07) to the lowest position.
2. Press the safety catch at the centre of the height change switch (45), at the same time moving it to the upper position.
- ① **Tip!** The headrest (07) can be adjusted for body heights between 76 cm and 102 cm.

#### Child seat front

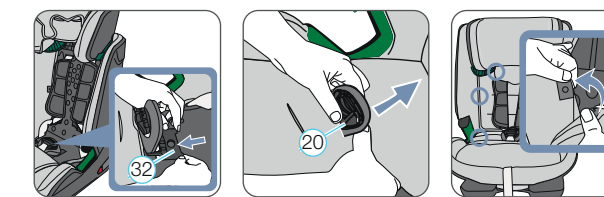
3. Fold the lower part of the headrest cover upwards and lay it over the headrest.



4. Open the two press studs on the inside of the headrest cover.
5. Release the two press studs on the back of the cover.
6. Release the two press studs on the seat cover and fold the cover forwards. When doing so, pull the SecureGuard (26) out of the cover.
7. Loosen the 5-point harness (09) on the child seat as far as possible. Tip: Pull the two shoulder straps forward while pressing the adjustment button (18).
8. Release the two opened shoulder cushions (19) from the Velcro strip and fold them around the shoulder straps (08).



- ⚠ **DANGER** Make sure that the shoulder straps (08) pass correctly through the shoulder cushions (19).
- 9. Remove the belt clips (21) from the recess provided on the (44) inside of the backrest.
- 10. Raise the grey release plate (32) and push it along with the SecureGuard (26) towards the backrest (30).
- 11. Turn the grey release plate (32) around so that the harness buckle (20) is at the top and the SecureGuard (26) is at the bottom.



12. Store the SecureGuard (26) in the recess provided and push the grey release plate (32) back into its holder until it engages with an audible click.
13. Pass the harness buckle (20) through the slot in the cover which is nearer to the backrest.
14. Close the two bottom press studs on the cover.
15. Close the two top press studs on the cover.
16. Close the two press studs on the upper cover of the headrest.

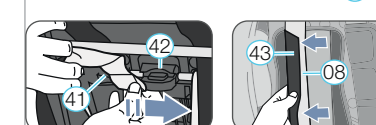
**⚠ CAUTION!** If the child seat is installed with Method **A**, always install the harness buckle (20) correctly, and if installed with Method **B**, always install SecureGuard (26) correctly. Make sure that the release plate (32) is correctly attached.

**⚠ CAUTION!** Check that the straps are not twisted and are laid correctly through the slots in the cover. The rear slot in the seat cover is provided for the harness buckle (20) and the front slot is provided for the SecureGuard (26). The slot at the front edge of the seat is for the harness adjusting strap (22).

### Removing the shoulder cushions



1. Loosen the shoulder straps (08) as far as possible.
2. Open the shoulder cushions (19) by the Velcro fasteners at the side.



#### Child seat back

3. Bring the top tether (13) forward over the front of the seat.
4. Unhook the storage pouch (14) at the top.
5. Pull out the shoulder straps (08) a little so that you can see the rubber loops of the shoulder cushions (19) underneath.
6. Unhook the rubber loops from the plastic bars (41) on the shoulder strap height adjuster (42).
7. Pull the shoulder cushions (19) forwards out of the harness slots.

#### Reattaching the shoulder cushions

Simply follow the steps above in reverse order.

**⚠ CAUTION** The shoulder cushions (19) and belts must not be twisted or swapped over. The shoulder straps (08) must be located under the black cover band (43) in the shoulder cushions (19).

76 - 150 cm

britax  
römer

ADVANSAFIX i-SIZE

GB

User instructions



www.britax-roemer.com

2000033754 - 11/19

## 4. PREPARATORY STEPS

First please read the section describing the desired installation method in Section 5.

### 4.1 Preparing ISOFIX

1. If your vehicle is not fitted with ISOFIX insertion aids as standard, clamp the two insertion aids 02 (which are supplied along with the seat), with recess facing upwards, into the two ISOFIX fixing points 01 in your vehicle.  
**TIP:** The ISOFIX fixing points are located between the seat surface and the backrest of the car seat.
2. Move the headrest of the car seat to its topmost position.
3. Pull the grey fabric loop at the back of the child seat 03 until the ISOFIX locking arms 04 are fully extended.
4. On both sides of the ISOFIX locking arms, squeeze the 04 green locking button 05 and the red release button 06 together. This ensures that both hooks on the ISOFIX locking arms 04 are open and ready to use.

\* The insertion aids make it easier to install the child seat using the ISOFIX fixing points and they prevent damage to the car seat covers. If they are not being used, remove them and keep them in a safe place. For vehicles with a folding backrest, the insertion aids need to be removed before folding the backrest.  
Any problems that occur are usually caused by dirt or external objects on the insertion aids and on the hook. Remove the dirt or external objects to resolve such problems.

### 4.2 Adjusting the headrest (76 - 102 cm / ≤ 21 kg)

A properly adjusted headrest 07 ensures optimal protection for your child on the child seat. Regularly check that the height of the headrest 07 is suitable for the body height of your child: The headrest 07 must be adjusted so that the shoulder straps 08 are at the same level as your child's shoulders, or slightly higher.

▶ The shoulder straps 08 must be adjusted so that they are horizontal or just above your child's shoulders.  
▶ The shoulder straps 08 must not be passed behind the child's back, or placed level with or above the child's ears.

#### The shoulder straps are adjusted as follows:

1. Loosen the 5-point harness 09 on the child seat as far as possible.
2. Press and hold the adjustment handle 10 on the back of the headrest 07.
3. The unlocked headrest 07 can now be moved to the desired height. When you release the adjustment handle 10, the headrest 07 locks into place.

### 4.3 Adjusting the headrest (100 - 150 cm)

A correctly adjusted headrest 07 ensures that the diagonal belt 11 is optimally positioned and gives your child optimum protection. Regularly check that the height of the headrest 07 is suitable for the body height of your child: The headrest 07 must be positioned so that two fingers can be inserted between the headrest 07 and your child's shoulders.

#### To adjust the height of the headrest to fit your child:

1. Press and hold the adjustment handle 10 on the back of the headrest 07.
2. The headrest 07 is now unlocked and can be moved to the desired height. When you release the adjustment handle 10, the headrest 07 locks into place.
3. Place the child seat on the car seat.
4. Sit your child on the child seat and check the height. Repeat this procedure until the headrest 07 is at the correct height.

## 4.4 FASTENING / REMOVING THE XP-PAD

The XP-PAD must only be used for installation methods B1 and B2.

### Fastening the XP-PAD

1. Remove the XP-PAD 46 from the storage pouch 14.
2. Fasten the XP-PAD 46 to the headrest 07 of the child seat.
3. Place the XP-PAD 46 on the side of the child seat closer to the vehicle door.
4. Guide the elastic holding strap of the XP-PAD 46 into the dark green belt holder 29 of the headrest 07 until it lies completely in the belt holder 29 and is not twisted.

### Removing the XP-PAD

1. Remove the elastic holding strap of the XP-PAD 46 from the dark green belt holder 29.
2. Remove the XP-PAD 46 from the headrest 07 of the child seat.
3. Store the XP-PAD 46 in the storage pouch 14.

## 5. INSTALLATION & USE

### A 76 - 102 cm / ≤ 21 kg With ISOFIX + Top Tether

#### 1. PREPARATORY STEPS

- 1.1 Follow the steps described in Section 4.1 "PREPARING ISOFIX".
- 1.2 Follow the steps in Section 4.2 "ADJUSTING THE HEADREST (76 - 102 cm / ≤ 21 kg)".
- 1.3 If you reset the child seat from installation method B1 or B2 to A, follow the steps "Removing the XP-PAD" in Section 4.4 "FASTENING/REMOVING THE XP-PAD".

#### 2. PREPARING THE TOP TETHER

- 2.1 Unhook the snap-on hook 12 of the top tether 13 from the fastening on the back of the child seat.
- 2.2 Take the top tether 13 out of the pouch 14 and lay it over the child seat.
- 2.3 Place the child seat in the direction of travel on an approved car seat. Adjust the backrest angle of the car seat so that the gap between the car seat and the child seat is as small as possible.
- 2.4 Take the top tether 13 and press the metal tongue 15 away from the belt to extend it, and pull the top tether 13 at the snap-on hook 12.
- 2.5 Guide the top tether 13 in the middle between the bars of the headrest 07, for integrated headrests on the side closer to the top tether 13 anchorage point of the vehicle.

#### 3. FIXING THE TOP TETHER

Attach the snap-on hook 12 to the anchorage point recommended in your vehicle's instruction manual.  
**CAUTION!** Check that you are not using luggage hooks instead of the top-tether anchorage points. Look for the following symbol in your vehicle:

#### 4. FASTENING THE ISOFIX

- 4.1 Position the two ISOFIX locking arms 04 directly in front of the two insertion aids 02.
- 4.2 Push the two ISOFIX locking arms 04 into the insertion aids 02 until the ISOFIX locking arms 04 engage on both sides with an audible click.  
**DANGER!** The green locking button 05 must be visible on both sides indicating that the child seat is correctly fastened.

## 5. PRESSING THE CHILD SEAT BACKWARDS

Push the child seat firmly backwards as far as it will go.

### 6. CHECKING FOR CORRECT FASTENING

Shake the child seat to check that it is securely fastened and check the locking buttons 05 to make sure that the two indicators are fully green.

### 7. TIGHTENING THE TOP TETHER

Tighten the top tether 13, until the belt tension indicator 16 turns green and the top tether 13 is tight.

### 8. ADJUSTING THE SICT

Turn the SICT 17 anti-clockwise (on the side nearer the vehicle door) until there is a gap of 5 mm between it and the vehicle door, or until it is fully unscrewed.

### 9. LOOSEN THE SHOULDER STRAPS

To loosen the shoulder straps, press the adjustment button 18 while at the same time pulling both shoulder straps 08 forward.  
**CAUTION!** Do not pull the shoulder cushions 19.

### 10. OPEN THE HARNESS BUCKLE

To open the harness buckle 20, press the red button on the buckle.

### 11. SET THE CHILD IN THE CHILD SEAT

Place your child in the child seat. Check that the harness buckle 20 is facing forwards.

### 12. PLACE THE SHOULDER STRAPS

Pass the shoulder straps 08 over your child's shoulders.  
**WARNING!** Do not twist or swap the shoulder straps, as this will remove their protective function.

### 13. FASTENING THE HARNESS BUCKLE

Take the two buckle clips 21 and hold them together before inserting them in the harness buckle 20 – they must make an audible click when inserted.

### 14. TIGHTENING THE ADJUSTMENT STRAP

Pull the adjustment strap 22 until the strap lies flat and snug around your child's body.  
**WARNING!** The hip belts must be positioned as low as possible across your child's hips.

**CAUTION!** Before each journey, in order to ensure your child's safety, make sure that ...

- ▶ the child seat is engaged on both sides with the ISOFIX locking arms 04 in the ISOFIX fixing points 01 and that both locking buttons 05 are fully green;
- ▶ the child seat is securely fastened;
- ▶ the top tether 13 is tight over the backrest of the car seat and the belt tension indicator 16 is green;
- ▶ the child seat belts fit snugly around the child's body without causing constriction;
- ▶ the shoulder straps 08 are correctly adjusted and are not twisted;
- ▶ the shoulder cushions 19 are in the correct position for your child's body;
- ▶ both buckle clips 21 are fully engaged in the harness buckle 20;
- ▶ the SICT side impact protection 17 is correctly installed and functional.

## B1 100 - 150 cm With ISOFIX + car seat belt

### 1. PREPARATORY STEPS

- 1.1 Follow the steps described in Section 4.1 "PREPARING ISOFIX".
- 1.2 Follow the steps in Section 4.3 "ADJUSTING THE HEADREST (100 - 150 cm)".
- 1.3 Follow the steps under "Fastening the XP-PAD" in Section 4.4 "FASTENING / REMOVING THE XP-PAD".

2. Place the child seat facing forward on an approved car seat. Make sure that the backrest 30 is flush with the backrest of the car seat.  
**TIP!** If the headrest of the car seat prevents the child seat from being fastened properly, it should be removed (see vehicle's instruction manual). Secure the removed headrest in a suitable place in the vehicle so that it will not be tossed around.

### 3. FASTENING THE ISOFIX

- 3.1 Position the two ISOFIX locking arms 04 directly in front of the two insertion aids 02.
- 3.2 Push the two ISOFIX locking arms 04 into the insertion aids 02 until the ISOFIX locking arms 04 engage on both sides with an audible click.  
**DANGER!** The green locking button 05 must be visible on both sides indicating that the child seat is correctly fastened.

### 4. PRESSING THE CHILD SEAT BACKWARDS

Push the child seat firmly backwards as far as it will go.

### 5. CHECKING FOR CORRECT FASTENING

Shake the child seat to check that it is securely fastened and check the locking buttons 05 to make sure that the two indicators are fully green.

### 6. Follow the steps in Section 7 "SECURING YOUR CHILD".

## B2 100 - 150 cm With car seat belt

The ADVANSAFIX i-SIZE is not permanently installed in the vehicle. It is simply secured along with your child by the vehicle's 3-point seat belt.

### 1. PREPARATORY STEPS

- 1.1 Follow the steps in Section 4.3 "ADJUSTING THE HEADREST (100 - 150 cm)".
- 1.2 Follow the steps under "Fastening the XP-PAD" in Section 4.4 "FASTENING / REMOVING THE XP-PAD".

2. Place the child seat on the car seat. Ensure that the backrest 30 is flat against the backrest of the car seat.  
**TIP!** If the headrest of the car seat prevents the child seat from being fastened properly, it should be removed (see vehicle's instruction manual). Secure the removed headrest in a suitable place in the vehicle so that it will not be tossed around.

### 3. Follow the steps in Section 7 "SECURING YOUR CHILD".

## 6. ADJUSTING THE SEAT ANGLE

The seat shell of the ADVANSAFIX i-SIZE can be used in three different reclined positions. The ADVANSAFIX i-SIZE is approved for use as follows:

Seat angle	Body height
Upright position	76 - 140 cm
Middle position	76 - 150 cm
Lying position	76 - 150 cm

## To adjust the seat angle:

Pull the adjustment handle 23 forwards and push/slide the seat pan 24 into the desired position.  
**DANGER!** The seat pan 24 must be firmly engaged, whatever the position. Pull on the seat pan 24 to check that it has engaged.

**TIP!** You can adjust the tilt angle of the child seat 24 even while your child is sitting on it. Tighten the vehicle seat belt after adjusting the seat angle if you use the child seat with the vehicle seat belt (B1 and B2).

## 7. SECURING YOUR CHILD

1. Turn the SICT 17 anti-clockwise (on the side nearer the vehicle door) until there is a gap of 5 mm between it and the vehicle door or until it is fully unscrewed.

2. Let your child sit in the child seat and place the XP-PAD 46 over the chest area of your child. If you find that the retraction force of the 3-point seat belt is not enough to ensure that the seat belt is tight (against the child), the child seat can be used without the XP-PAD 46.

3. Pull out the car seat belt, pass it in front of your child and into the car seat belt buckle 27.

**DANGER!** Check that the car seat belt is not twisted, otherwise the full protective action of the restraint system will be impaired.

4. Insert the buckle clip in the car seat belt buckle 27 until there is an audible click.

5. Place the diagonal belt 11 and lap belt 25 on the side of the car seat belt buckle 27 in the bright green belt guide 28 on the seat cushion.  
**DANGER!** The seat belt buckle 27 must not be placed near the bright green belt guide 28.

6. Also place the lap belt 25 on the other side of the seat cushion in the bright green belt guide 28.  
**DANGER!** The lap belt 25 must be placed as low as possible over your child's hips on both sides.

7. Insert the lap belt 25 in the bright green SecureGuard 26.  
**DANGER!** Do not insert the diagonal belt 11 in the bright green SecureGuard 26.

8. Place the diagonal belt 11 in the dark green belt holder 29 at the headrest 07 until it is fully in the belt holder 29 without twisting.  
**TIP:** If the backrest 30 is covering the dark green belt holder 29, you can adjust the headrest 07 upwards. The diagonal belt 11 can now be easily inserted. You can now adjust the headrest 07 back to the correct height.

9. Make sure that the diagonal belt 11 passes over the collarbone of your child, not the neck, and that the button on the dark green belt holder is 29 fully closed.  
**TIP:** You can adjust the height of the headrest 07 again in the vehicle.

10. Open the Velcro fastener on the XP-PAD 46 and fold the top part of the XP-PAD 46 to the side.

11. Insert the diagonal belt 11 in the die nubby surface of the XP-PAD 46.

12. Close the XP-PAD 46 again by folding the folded part back and closing the Velcro fastener.  
**DANGER!** The diagonal belt 11 must run diagonally backwards. You can adjust the belt routing with the adjustable belt deflector in the vehicle.  
**DANGER!** The diagonal belt 11 must never run forwards towards the belt deflector on the vehicle. In this case, use the child seat on the back seat only.

13. Tighten the car seat belt by pulling on the diagonal belt 11.

**CAUTION!** Before every journey, for your child's safety, check that ...

- ▶ the child seat is engaged on both sides with the ISOFIX locking arms in the ISOFIX fixing points and both locking buttons are fully green (only applies to B1 | with ISOFIX and car seat belt);
- ▶ the child seat is securely fastened;
- ▶ the lap belt is passed into the bright green belt guides on both sides of the seat cushion,
- ▶ the lap belt passes through the bright green SecureGuard,
- ▶ the diagonal belt on the side of the car seat belt buckle also passes through the bright green belt guide on the seat cushion,
- ▶ the diagonal belt runs through the dark green belt holder of the headrest,
- ▶ the XP-PAD and SICT side impact protection are correctly installed and used,
- ▶ the diagonal belt runs diagonally backward,
- ▶ the straps are tight and not twisted,
- ▶ the car seat belt buckle is not placed in the bright green belt guide on the seat cushion.

**DANGER!** If your child tries to open the car seat belt buckle 27 or insert the diagonal belt 11 in the bright green SecureGuard 26, stop your vehicle immediately, or as soon as possible. Check that the child seat is correctly fastened and that your child is correctly secured. Explain to your child the dangers caused by such actions.

## 8. REMOVING THE CHILD SEAT

### 8.1 UNFASTENING YOUR CHILD:

A) 76 - 102 cm / ≤ 21 kg (ISOFIX + TOP TETHER)

To unfasten your child, press the red button on the buckle.

B) 100 - 150 cm (ISOFIX + CAR SEAT BELT / CAR SEAT BELT)

To unfasten your child, use the release button of your car seat buckle.

**TIP!** The XP-PAD can remained applied for easier use on the diagonal belt of your vehicle, the diagonal belt must be retensioned before every journey; see: Section 7 step 11 [page II].

### 8.2 REMOVAL:

**DANGER!** Remove the child seat from the vehicle. Never carry the child seat in the car if it is not fastened properly.

A) 76 - 102 cm / ≤ 21 kg (ISOFIX + TOP TETHER)

1. Loosen the top tether 13 by pushing the metal tongue 15 away from the belt.
2. Release the snap-on hook 12 from the anchorage point in the vehicle and lay the top tether 13 to the front over the child seat.
3. Loosen the ISOFIX fastening on both sides by squeezing the green locking button 05 and red release button 06 together.
4. Pull the seat forward and store the top tether 13 in the storage pouch 14 and attach the snap-on hook of the top tether 13 to the fastening on the back of the child seat.
5. Move the ISOFIX locking arms 04 back into the seat pan 24.

B) 100 - 150 cm (ISOFIX + CAR SEAT BELT / CAR SEAT BELT)

1. Press the release button on your car seat buckle
2. Open the XP-PAD 46 on the Velcro fastener and remove the diagonal belt 11.
3. Open the dark green belt holder 29 by pressing the button on the belt holder 29 backwards, then pull out the diagonal belt 11.  
**Only for installation method with ISOFIX:**
4. To release the ISOFIX fitting, squeeze the green locking button 05 and red release button 06 together, first on one side then on the other.
5. Move the ISOFIX locking arms 04 back into the seat pan 24.